

# Westport Light State Park



October 8, 2019- Community Meeting



EMBRACE YOUR  
**NATURE**

# Today's Agenda

- **Sign-in**
- **Introductions**
- **State Parks**
  - Brief History
  - Recreation Concession Area (RCA's)
  - Partnership/Master Plan
- **Westport Golf, LLC Concept**
- **Sticky Note Process**
- **Adjourn**



# Objective

- Background information about park
- Recreation Concession Areas (RCA) Program
- Conceptual proposal- Westport Golf, LLC.
- We want to hear from you
  - Suggestions
  - Weigh in
  - Better understand what the community would like to see

# Location



# Westport Light State Park



# Park History



# Park History



# Friends Groups



2018 Friends Group Conference, Cama Beach State Park

- Over 20 formal Friend Groups statewide
- Non-profit organizations
- Hold park events
- Coordinate volunteers for projects
- Encourage community interest
- Area groups include:
  - Friends of Sacajawea
  - Friends of Mount Spokane
  - Riverside Foundation



# Westport Light State Park



- 603-acre mostly undeveloped park
- Offers 1.3 mile ADA compliant dune trail
- 2 Parking lots
- 2 Comfort stations



# Recreation Concession Areas (RCA's)

- 2013-Transformation Strategy
- 2014 Consultant report on underutilized lands in system
- 2015- Updates to our Real Estate Policy



# Recreation Concession Areas (RCA's)

2016-  
Commission  
approved 4 sites  
for RCA purposes

- Westport Light
- Fort Flagler
- Squilchuck
- Millersylvania



# Recreation Concession Area

- **Public meeting March 2016**
  - What we heard:
    - Concerns with competing with local businesses
    - Concern re: wetlands impacts
    - Community supports economic development
- **Sept. 2016- 34 acres approved**
  - RV campgrounds
  - Groupings of vacation cottages
  - Food services



# Recreation Concession Areas



**August 2017- Non-Responsive Bids**

**Revised/Advertised in November 2017**

- 1. Reid Development Group, LLC.**
- 2. City of Westport**

**2019- Westport Golf, LLC. approached  
State Parks**

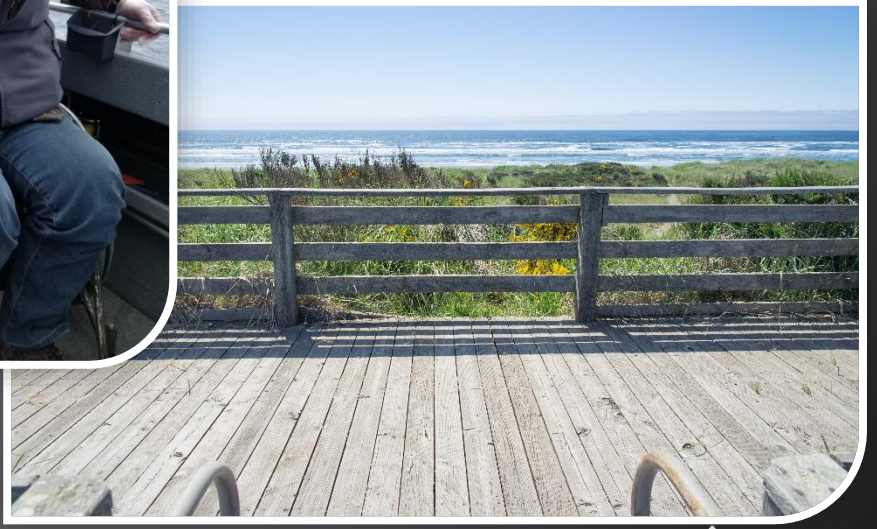
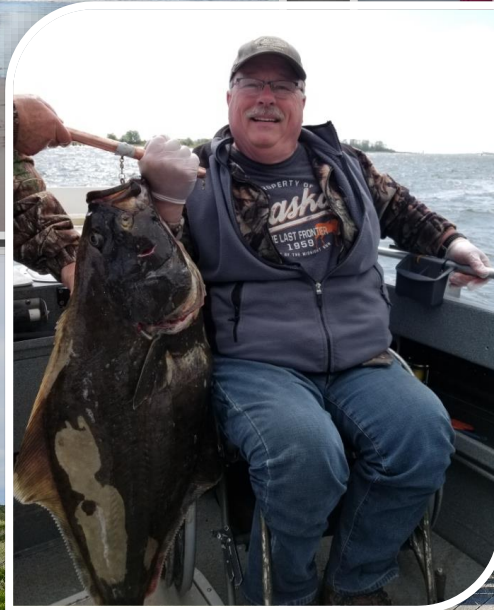
## **Request for Qualifications**



# Master Plan

- **What does this park want to be when it grows up?**
  - Camping
  - Interpretive opportunities-tribal history
  - Environmental education
  - Trails
  - Playground
  - Scottish links golf course
  - Enhance or support City amenities

# Westport Opportunities



# Grays Harbor Lighthouse



Dedication of the lighthouse was on June 30, 1898

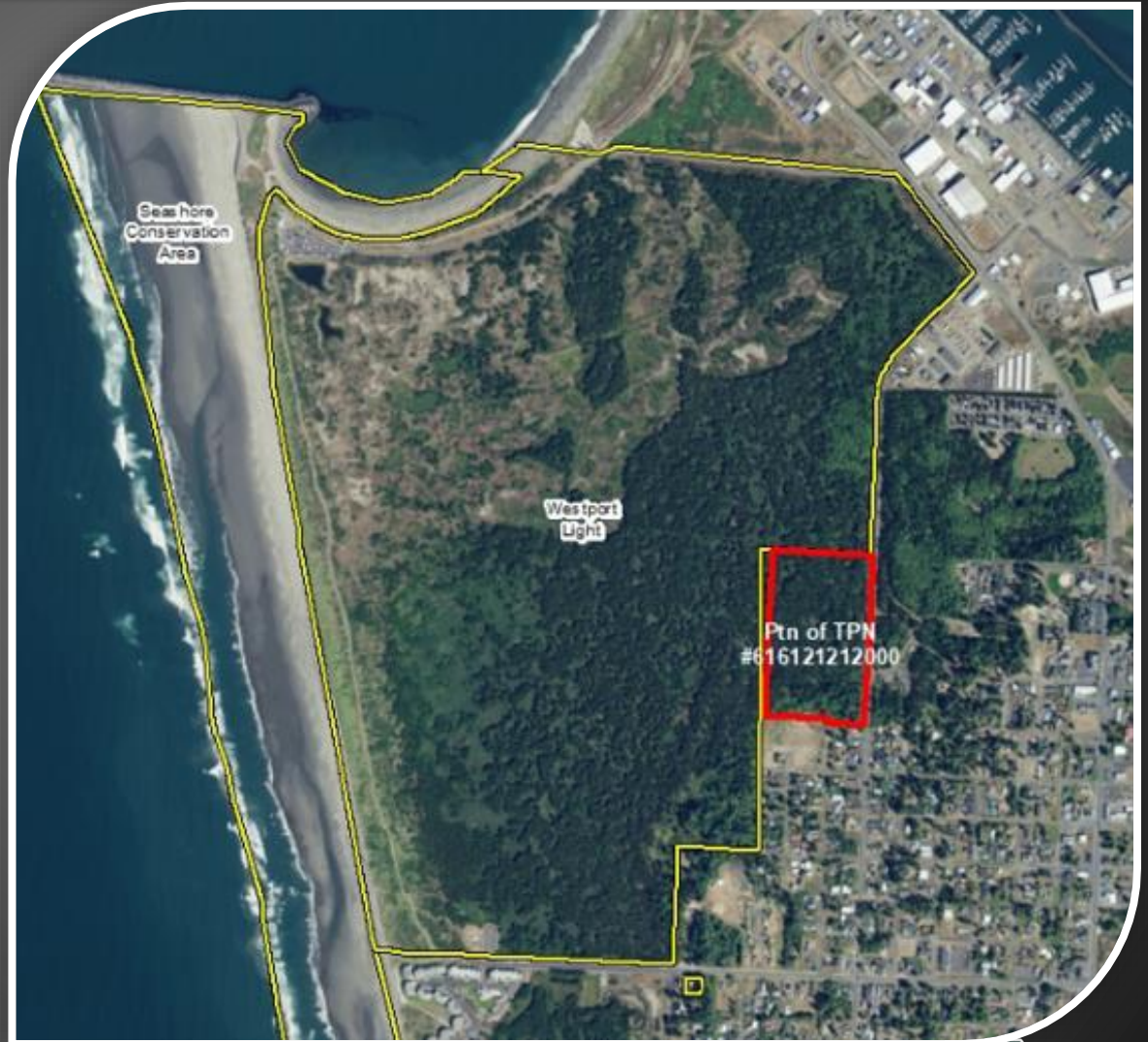
107 feet tall, tallest lighthouse in Washington State



# State Parks and City of Westport Partnership

- **MOU**

- Approx. 37 acres
- Master Plan



# Let Us know

---

- Write down your comments, ideas, concerns and questions
  - Sticky note
  - Comment box
  - Tell a staff person and we'll write it down
- One comment per sticky note please
- Reconvene



# Next Steps

---

Enter into a Memorandum of Agreement (MOA) with Westport Golf, LLC.

*Master Planning Process*  
*Environmental Review*  
*Public Process*

# Adjourn

---

- Email additional comments to Laura Moxham, Parks Planner, at [laura.moxham@parks.wa.gov](mailto:laura.moxham@parks.wa.gov)



EMBRACE YOUR  
**NATURE**