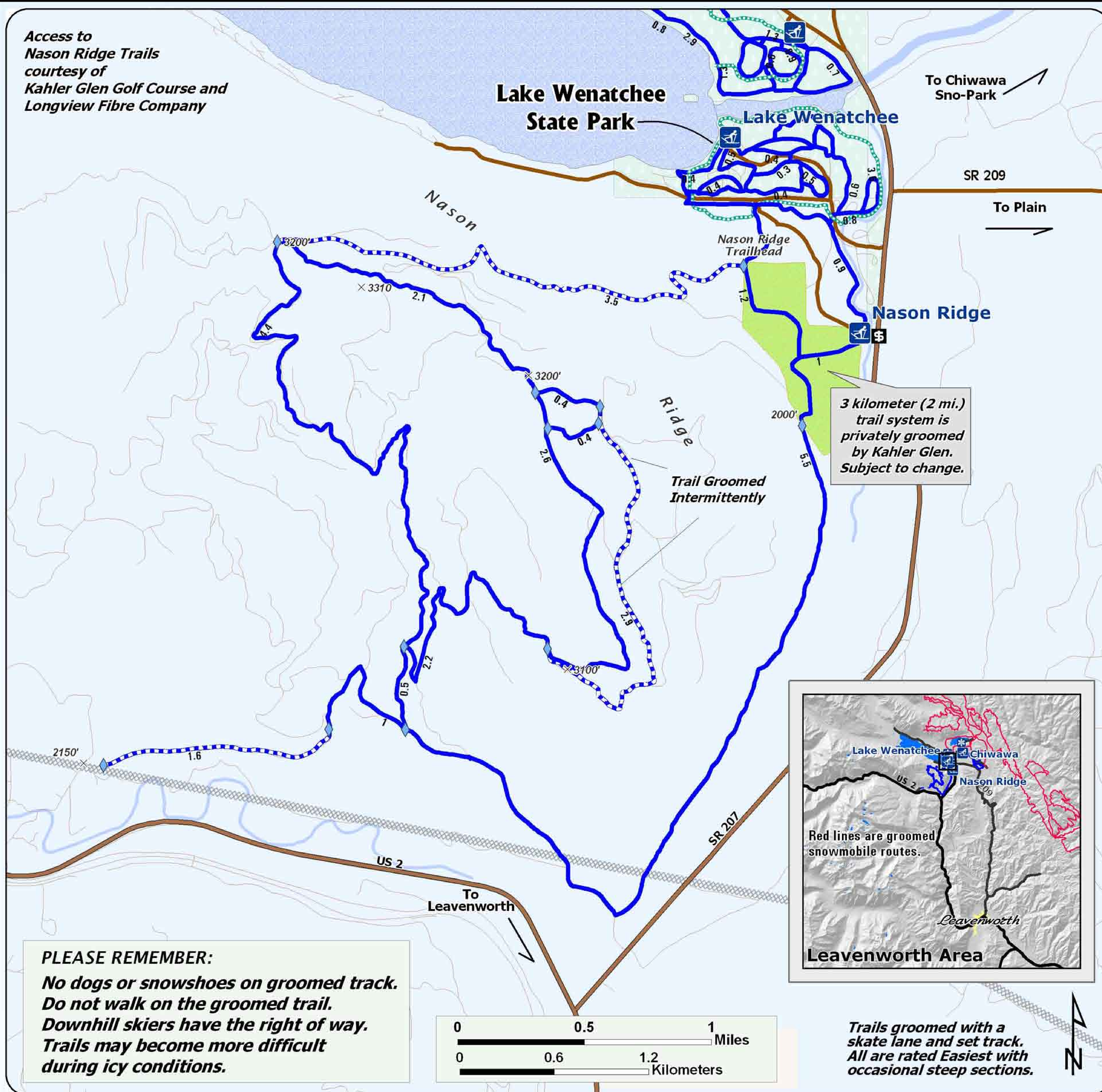


Access to  
Nason Ridge Trails  
courtesy of  
Kahler Glen Golf Course and  
Longview Fibre Company

# Welcome Nason Ridge Sno-Park Groomed Trail System



- Explanation**
- CartoColorTint
  - Non-Motorized Sno-Park
  - Groomed Ski Trail
  - Trail Not Groomed
  - Designated Snowshoe Trail
  - Trail Junction
  - Elevation in Feet
  - Restroom
  - Highway
  - Sno-Park Access Road
  - Road or Trail
  - Utility Corridor
  - Park Boundary
  - Kahler Glen Golf Course
  - Special Grooming Permit Required

3 kilometer (2 mi.)  
trail system is  
privately groomed  
by Kahler Glen.  
Subject to change.

**Nason Ridge has 22 kilometers  
(12 mi.) of groomed cross country  
ski trails. Distance labeled between  
intersections.**



*Snow grooming equipment may  
be on the trail at any time.*

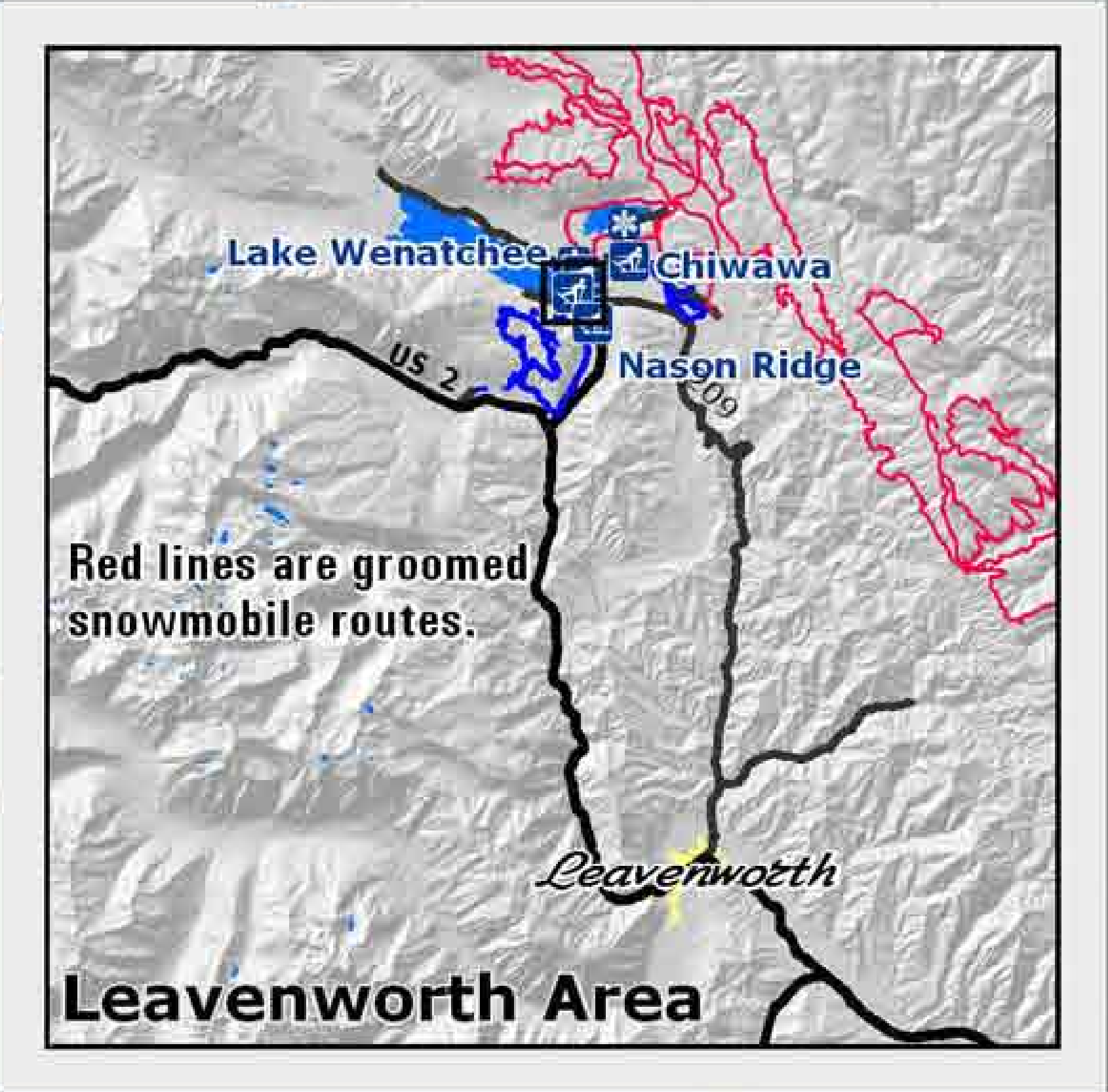
*Trail grooming schedules may change  
without notice due to snow conditions,  
temperatures, equipment breakdowns, etc.*

*Be aware of potential avalanche danger,  
check [www.nwac.us](http://www.nwac.us) before you leave home.*

*Trail grooming schedules and maps at  
[www.parks.wa.gov/winter](http://www.parks.wa.gov/winter)  
Please report errors or comments to:  
[winter@parks.wa.gov](mailto:winter@parks.wa.gov)*

**For Emergency Call 911  
Lake Wenatchee SP 509-630-0038  
or Chelan Co. Sheriff 509-663-9911**

**PLEASE REMEMBER:**  
*No dogs or snowshoes on groomed track.  
Do not walk on the groomed trail.  
Downhill skiers have the right of way.  
Trails may become more difficult  
during icy conditions.*



*Trails groomed with a  
skate lane and set track.  
All are rated Easiest with  
occasional steep sections.*

