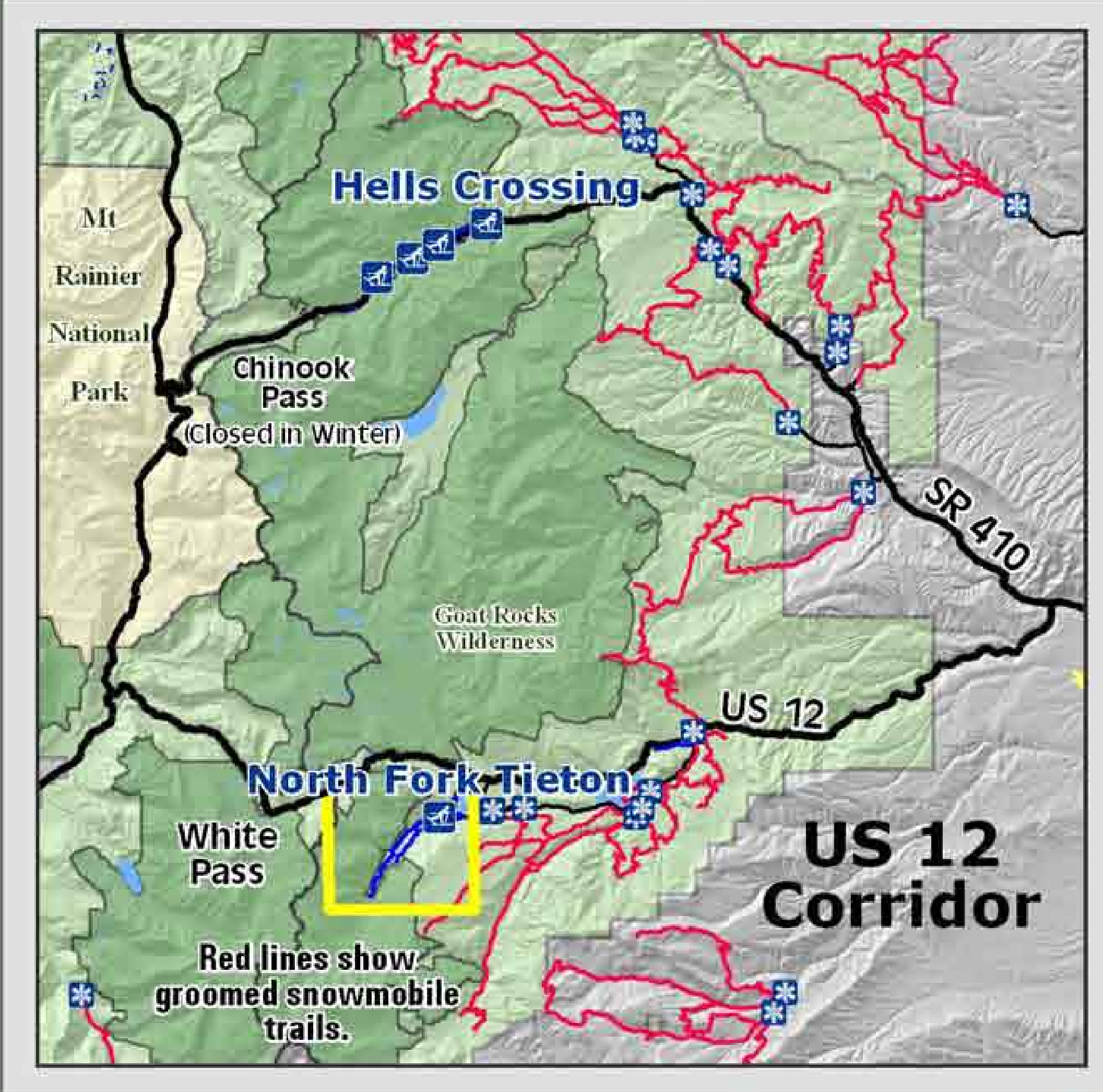
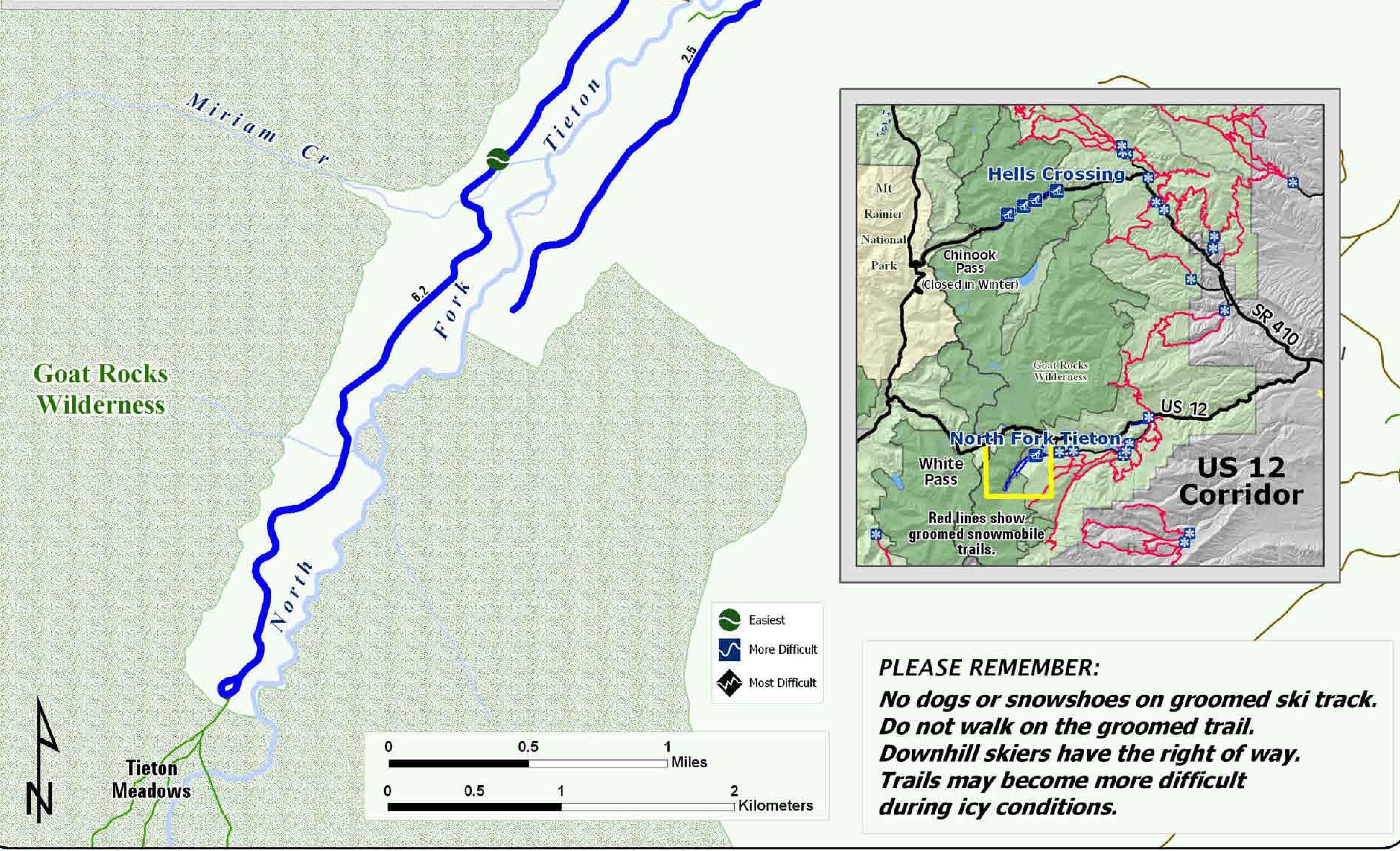
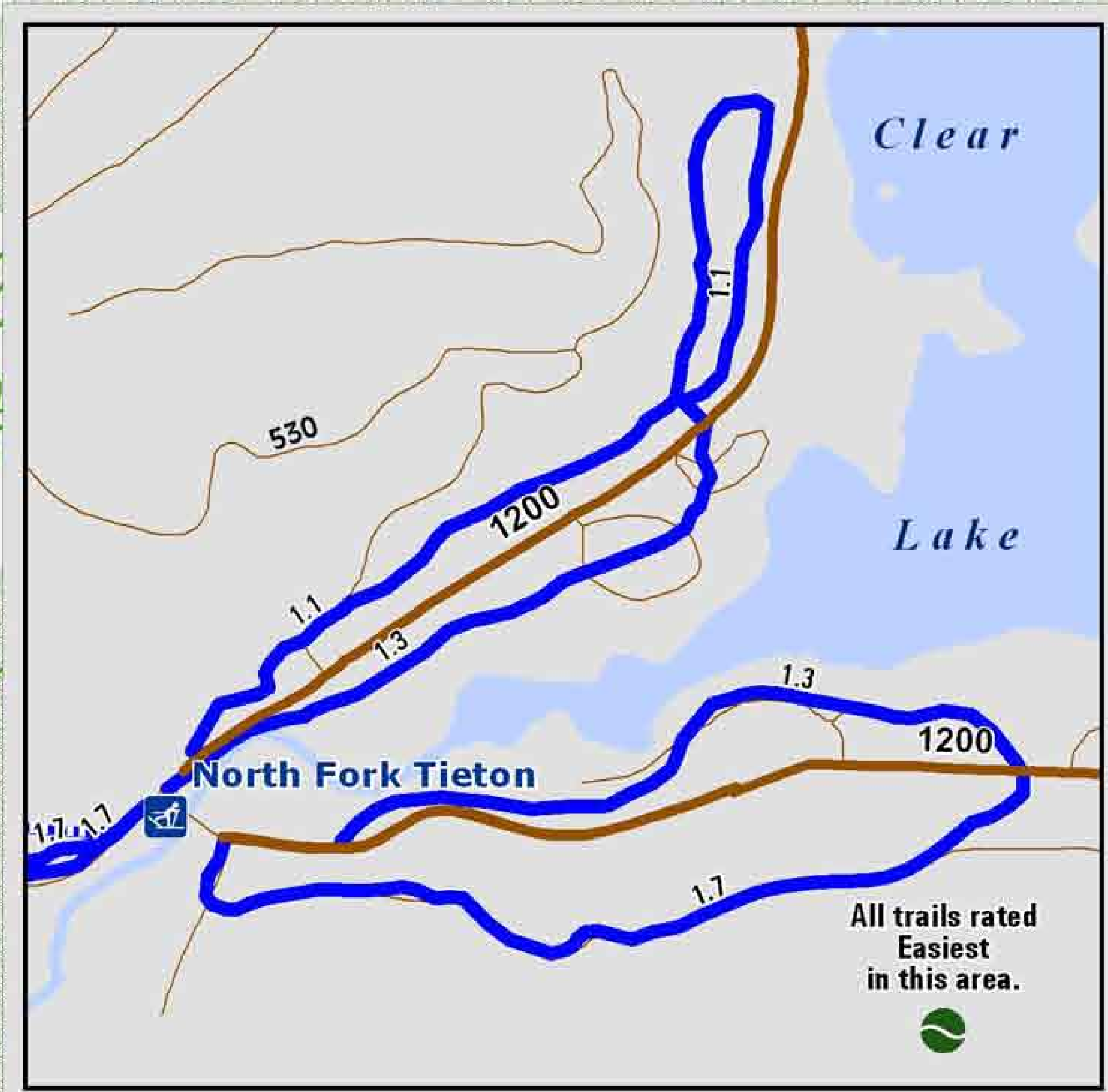


Welcome North Fork Tieton Sno-Park Groomed Trail System



Explanation

- Non-Motorized Sno-Park
- Groomed Ski Trail
- Marked Ski Route
- Sno-Park Access Road
- Road
- Trail
- Wilderness Area

North Fork Tieton Trail System has 20 kilometers (10 miles) of groomed cross country ski trails.

Kilometers

Snow grooming equipment may be on the trail at any time.

Trail grooming schedules may change without notice due to snow conditions, temperatures, equipment breakdowns, etc.

Be aware of potential avalanche danger, check www.nwac.us before you leave home.

*Trail grooming schedules and maps at www.parks.wa.gov/winter
Please report errors or comments to: winter@parks.wa.gov*

**For Emergency Call 911
Yakima Co. Sheriff 509-574-2500**

PLEASE REMEMBER:
No dogs or snowshoes on groomed ski track.
Do not walk on the groomed trail.
Downhill skiers have the right of way.
Trails may become more difficult during icy conditions.

- Easiest
- More Difficult
- Most Difficult

