

January 18, 2007

Item E-7: Lower Hood Canal Area Classification and Management Planning (CAMP) - Requested Action

EXECUTIVE SUMMARY: This item asks the Commission to adopt long-term boundaries and land classifications for Twanoh, Belfair, and Potlatch State Parks, as well as the Lilliwaup Tidelands and Lake Isabella properties. This item complies with the Centennial 2013 Plan element, “Our Commitment - Stewardship”.

SIGNIFICANT BACKGROUND INFORMATION: A Classification and Management Planning (CAMP) project for the Lower Hood Canal Area began in March 2006 as a cooperative effort between Puget Sound and Southwest regions. See Appendix 1 for a location map showing Lower Hood Canal State Parks.

Public outreach for this CAMP was extensive. The planning team established an advisory committee consisting of stakeholders who had previously expressed an interest in the area’s state parks, including representatives from the Hood Canal Coordinating Council, Hood Canal Salmon Enhancement Group, Skokomish Tribe, Washington Department of Health, Washington Department of Fish and Wildlife, Mason Conservation District, and local landowners. In addition, staff sent e-mails to park customers and mailed letters to neighbors and other stakeholders. Public workshops were held near the towns of Shelton and Belfair at each planning stage. The workshops were represented in the *Mason County Journal* and the *Kitsap Sun* newspapers. Reports and comments from the public were posted on the project web page:

<http://www.parks.wa.gov/plans/lowerhoodcanal>

STAFF RECOMMENDATION:

Land Classification and Long-Term Boundary

Detailed staff recommendations for land classification and long-term boundaries are included in Appendix 2. In general, staff makes the following recommendations for land classifications:

- Classify high quality salt marsh habitat and forested, undeveloped watersheds as Natural Areas.
- Classify tidelands and most wetlands and riparian areas as Resource Recreation Areas.
- Classify historic homesteads and Civilian Conservation Corps developments as Heritage Areas.

- Classify existing campgrounds, boat launches, and other intensively developed areas as Recreation Areas. Disturbed areas at Lake Isabella State Park suitable for future development are also included in this classification.

The proposed long-term boundary for each of the Lower Hood Canal parks and properties is mapped and described in Appendix 2.

Key Issues

The issues below are those that received the most public attention. A draft management plan with a full list of issues and recommendations will be available upon request, on the State Parks planning page <http://www.parks.wa.gov/plans/lowerhoodcanal/>, and at the Commission meeting.

Belfair State Park: Four main issues arose from the public workshops:

1. Protect and enhance the natural saltwater shoreline of Hood Canal and Mission Creek riparian environs.
2. Enhance the shellfish harvest, visitor interpretation, and notification of the rules guiding recreational harvest.
3. Consider adjacent property acquisition for expansion of the RV camping facility and reduce the density of the existing developed camping area.
4. Plan for a trail link along the saltwater shoreline to connect with the Theler Wetlands near Belfair State Park.

Twanoh State Park:

Three main issues arose from the public workshops:

1. The desire to protect the facilities and the rustic character of the CCC era camp and day use facilities.
2. Enhance trails at the park to include a connection for an overland trail link to Mason Lake County Park as part of the long-term boundary of the park.
3. Protection of the saltwater shoreline and stream corridor from visitor impacts and the consideration of removal of shoreline armoring to restore the natural character of the beach area.

Potlatch State Park: Two main issues arose from the public:

1. Evaluate campground needs, particularly number versus size of campsites and utility versus standard sites.
2. Pursue opportunities for increased interpretation and volunteer stewardship.

Lake Isabella State Park: Four main issues arose from the public:

1. Protect and maintain the historic homestead, with its hay fields and heritage orchards.
2. Provide an off-leash dog area.
3. Provide lake access at the park, while protecting the shoreline. Motorized boat launch facilities should remain at the nearby Washington Department of Fish and Wildlife launch.
4. Provide equestrian facilities and links to nearby trail networks.

Consistency with the Centennial 2013 Plan: On October 14, 2004, the Commission determined that Lake Isabella was potentially consistent with the Centennial 2013 Vision. The planning team recommends that the Commission determine that Lake Isabella is consistent with the Centennial 2013 Vision, subject to adoption of a park facilities concept plan. Staff has developed concept proposals for park use and development (Appendix 3), which include:

- **Trail connections:** Staff is investigating opportunities to provide trail connections between Lake Isabella and the trail network on Green Diamond Resource Company lands. The park could serve as the gateway to extensive backcountry trail opportunities. Various equestrian user groups have voiced an interest in working with Parks to develop equestrian facilities and access to future trail networks.
- **Preserving and interpreting agricultural heritage:** Lake Isabella protects numerous aspects of the area's agricultural history, including orchards, haying, Christmas tree production, and forestry. Parks has an ongoing partnership with the Mason Conservation District and Mason County Master Gardeners. These groups would like to continue partnering with Parks on future projects, such as workshops on managing various farm resources, developing a community food bank garden, and interpreting and managing heritage orchards.
- **Park improvements:** The planning team has developed multiple potential concepts for park development including: over night camping, lake access (swimming), day-use facilities, environmental classroom, ADA. and interpretive trails, dog off-leash, disc golf course, and equestrian facilities.
- **Sustainability:** Lake Isabella provides an excellent opportunity to demonstrate sustainable development. The staff vision for the park includes integrating sustainable design into the supporting infrastructure and landscape. With the aid of interpretation the park could serve to demonstrate sustainable technologies for park visitors. Examples of sustainable design could include, but are not limited to, green roofs, composting restroom facilities, and drought tolerant native plant landscapes.

SUPPORTING INFORMATION:

Appendix 1: Lower Hood Canal Area Vicinity Map

Appendix 2: Descriptions of Land Classification, Conditional Uses, and Long-Term Boundary

Appendix 3: Draft Lower Hood Canal Area Management Plan

Appendix 4: Public comments

AUTHORITY:

RCW 79A.05.030(1), WAC 352-16-020, and WAC 352-16-030.

REQUESTED ACTION OF COMMISSION:

That the Washington State Parks and Recreation Commission:

1. Consider the data, views, or arguments submitted by any person on the proposed long-term park boundary and land classification for the Lower Hood Canal Area;

2. Adopt land classifications and long-term park boundaries, and approve conditional uses as recommended by staff in Appendix 2;
3. Find that Lake Isabella State Park is consistent with the Centennial 2013 Vision.
4. Affirm that the long-term boundary and land classification decisions are for Commission policy direction only and should not affect private property values, be used as an indication of a property owner's willingness to sell, or be used as a basis for making state or local government regulatory, permitting, or zoning decisions on private land holdings.
5. Affirm that working with owners of properties within the park's long-term boundary to voluntarily protect natural or cultural resources contiguous with those on park property may achieve the desired conservation effect and avoid the need for fee acquisition of these properties. If feasible in the future, acquisition of these properties should be on a willing seller basis.

Author(s): Lisa Lantz, Southwest Region Stewardship Manager
lisa.lantz@park.wa.gov (360) 956-4803

Steven Starlund, Puget Sound Region Stewardship Manager
steven.starlund@parks.wa.gov (253) 288-2579

Peter Herzog, Parks Planner
peter.herzog@parks.wa.gov (253) 902-8652

Reviewer(s):

SEPA Review: Following review, staff prepared an environmental checklist and "threshold determination" on **November 29, 2007** for the preliminary staff recommendation finding that the action proposed by the Commission staff was minor and the environmental effects not significant.

Copies of these documents have been provided to members of the Commission, and will be made available to other interested parties upon request.

Fiscal Impact Review: This agenda item has no fiscal impact. The only actions that the Commission is asked to approve is adoption of long-term boundaries and land classifications. Actual implementation of these actions will come in subsequent agenda items to the Commission that may have impact on both the Capital and Operation budgets.

Assistant Attorney General: Reviewed 11/29/07

Larry Fairleigh, Assistant Director

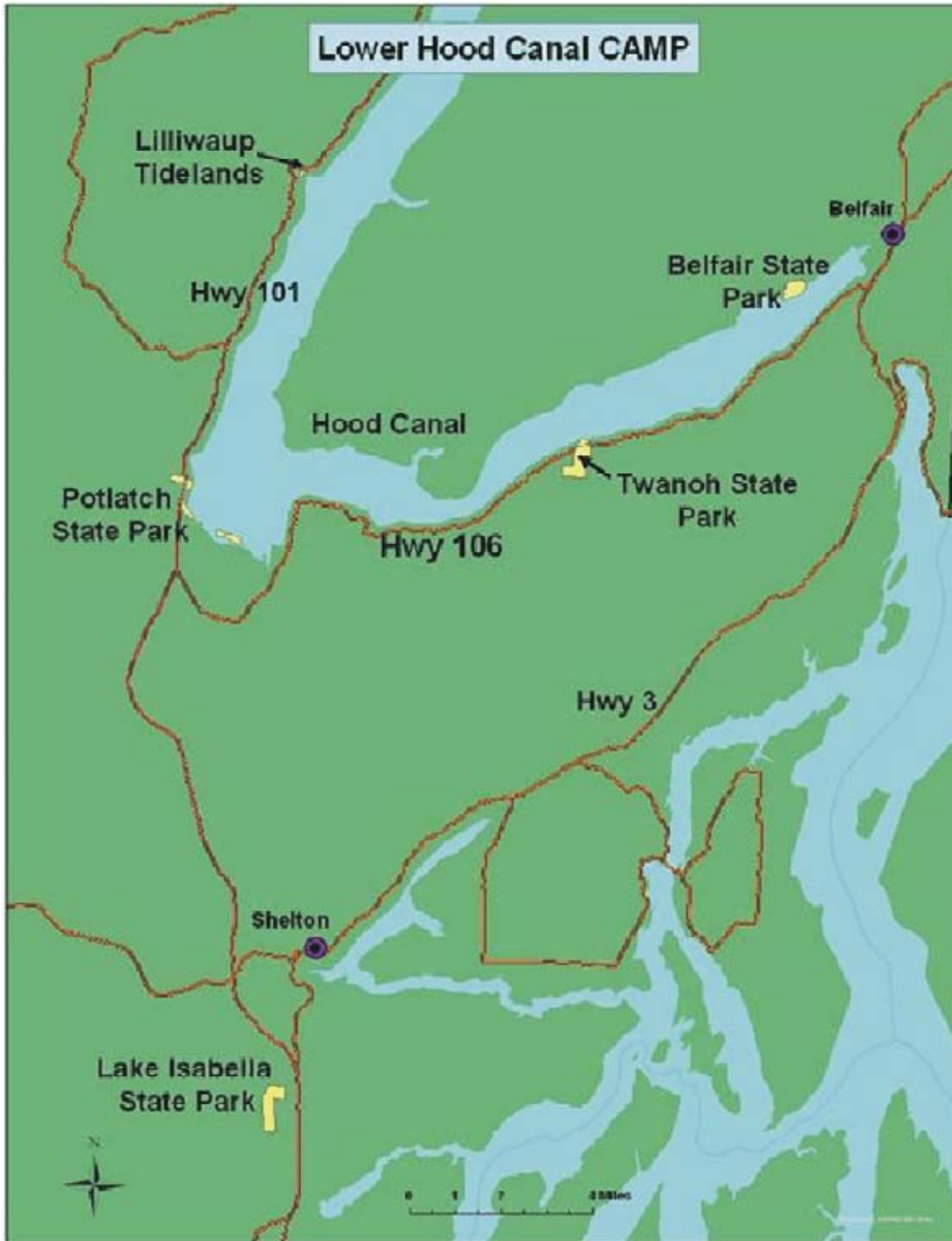
Judy Johnson, Deputy Director: _____

Approved for Transmittal to Commission:

Rex Derr, Director_____

APPENDIX 1

LOWER HOOD CANAL VICINITY MAP



APPENDIX 2

DESCRIPTIONS OF LAND CLASSIFICATIONS, CONDITIONAL USES, AND LONG-TERM BOUNDARY

Belfair State Park

Land Classifications

Through analysis of future program direction, facility needs, and the existing natural and cultural resource base, staff recommends that the Commission classify Belfair State Park as a combination of Recreation, Resource Recreation Area, and Natural Areas (Figure 1).

Recreation Areas

The developed camping area and day-use parking areas are high intensity recreation areas with a history of heavy camping and day-use recreation. Staff recommends the Commission classify the largest portion of the park as Recreation to permit intensive recreation opportunities to continue.

Activities *conditionally* permitted under the agency's land classification system may be permitted at specific sites only with the concurrence of the Commission. Activities conditionally permitted in Recreation Areas include:

- Farming/orchards
- Off-Trail Equestrian
- Grazing
- Off-trail Cycling

Staff recommends the Commission not approve any conditional uses within Recreation Areas.

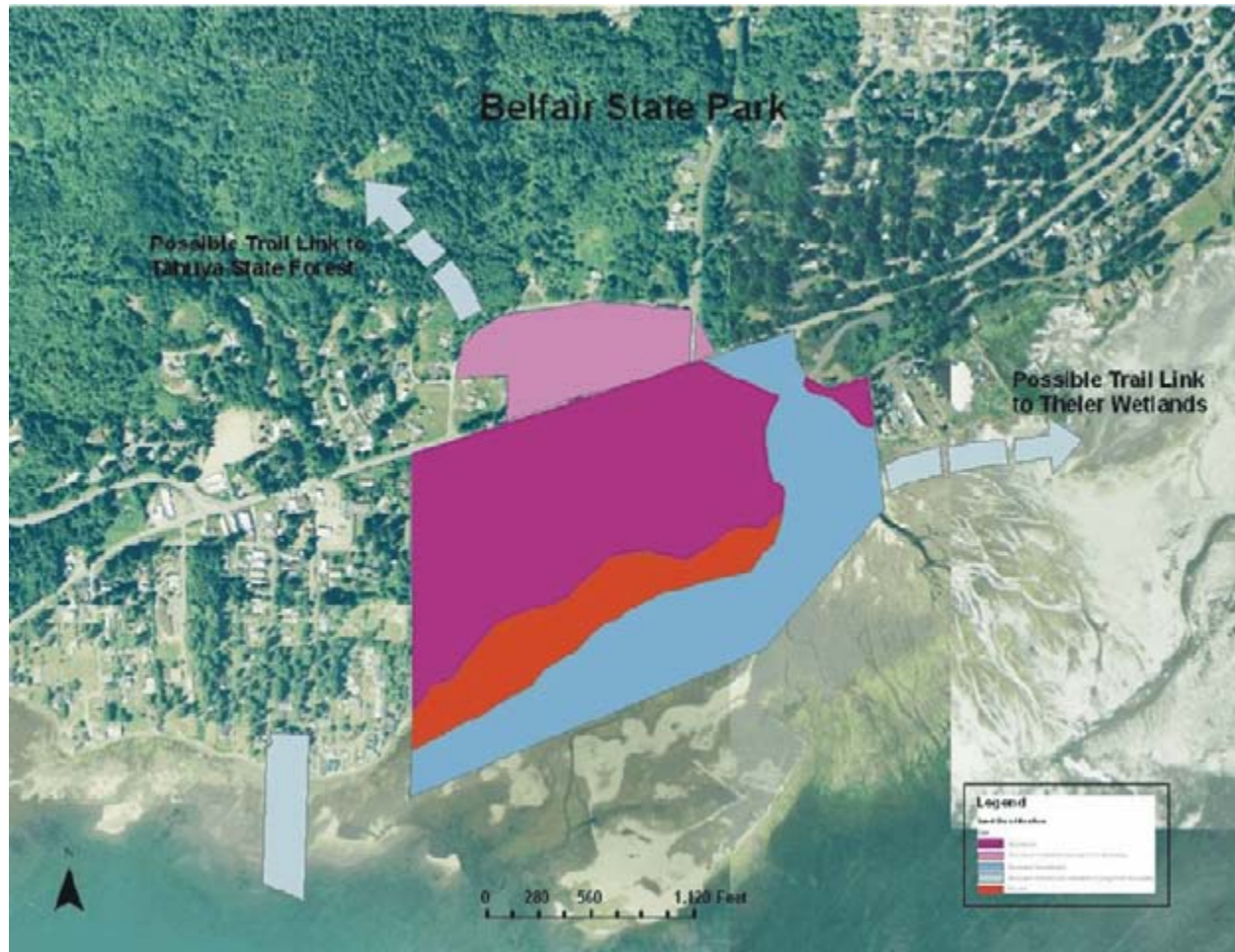
Resource Recreation Areas

The Hood Canal tidelands provide the main attraction at Belfair State Park. Shellfish harvesting, kayaking, and swimming draw many park day-use and overnight visitors. The recently rehabilitated nearshore environment, which removed man-made obstructions from the estuary of Big Mission Creek, has created new natural shoreline. These areas can sustain dispersed recreational use and still retain their habitat value for fish, shorebirds, and wildlife. Therefore, the shoreline portions of the park are best protected by the Resource Recreation classification. This classification allows the planting of shellfish and management of the tidelands for harvest.

The proposed long-term boundary at Belfair State Park includes two trail corridors to connect the park with other recreation opportunities. One of the corridors would link the park to the Theler Wetlands located to the east. The other corridor would lead north to connect the park to Tahuya State Forest. The Washington Department of Fish and Wildlife property to the west of the park is also included in the park's long-term boundary. The property could be managed for water access, shellfish harvest, and as a water trail site.

Staff recommends that the Commission classify these areas as Resource Recreation to allow existing hiking, shellfish harvesting and water access activities.

Figure 1. Belfair State Park Land Classification and Long-Term Boundary Staff Recommendations



Activities Permitted in Resource Recreation Areas, by land classification include:

- Filming/Special Events
- Harvesting (fruits, mushrooms, algae, fish, and shellfish)
- Haying
- Metal Detecting
- Orienteering
- Off-Trail Hiking
- Paragliding
- Water: Kayaking/Canoeing
- Water: Sailing
- Water: Swimming

Activities conditionally permitted in Resource Recreation Areas include:

- Farming/orchards
- Grazing
- Off-Trail Equestrian
- Off-Trail Cycling
- Water: Jet Skiing
- Water: Power Boating
- Water: Skiing
- Water: Wind Surfing

Of these, staff recommends the Commission only permit wind surfing within Resource Recreation Areas.

Natural Areas

Saltwater marsh along park shorelines is among the park's most significant and fragile natural features. Staff recommends these areas be classified as Natural Area to limit use to low-intensity only and emphasize salt marsh interpretation.

Activities permitted in Natural Areas include:

- Harvesting (fruits, mushrooms, algae, fish, and shellfish)
- Off-Trail Hiking
- Water: Swimming

Activities conditionally permitted in Natural Areas include:

- Filming/Special Events
- Technical Rock Climbing
- Water: Kayaking/Canoeing
- Water: White Water Boating
- Water: Skiing
- Water: Sailing

Staff recommends the Commission not permit any conditional uses in Natural Areas.

Long-Term Park Boundary

Delineation of long-term park boundaries is a relatively new aspect of park planning. The purpose of a long-term boundary is to look at the function and potential of a park with fresh eyes and consider what property additions (or deletions), might advance the vision and goals of the park, independent of current ownership limitations. This process not only considers whether an adjoining property would make a suitable addition, but also considers whether agency-owned property should be retained or might appropriately be considered surplus to park needs. Including a privately owned property in a long-term boundary does not necessarily mean the agency wants to purchase it. It simply means that it would be in the park's best interest if the property were managed in a condition that complements development and operation of the park. Any of the following possibilities could apply:

The agency might:

- Seek to formalize an agreement with an adjacent property owner to advance a shared property management goal.
- Solicit a conservation easement from an adjacent property owner to protect certain natural or cultural features.
- Readily accept a donation of all or part of a private property.
- Consider exchanging agency-owned property for a private property.
- Consider purchase of a private property in fee.

Staff recommends that the following properties be included within the park's long-term boundary:

- Property to the north of highway 300 across from the park for administrative relocation and RV camping expansion.

- Washington State Department of Fish and Wildlife tidelands and upland ownership to the west of the park for enhanced tideland recreation opportunities.
- Trail corridor route along the shoreline to link with Theler Wetlands near Belfair.
- Trail corridor between the existing park and Tahuya State Forest.

State Parks seeks to acquire properties identified in this action on a willing seller basis.

Twanoh State Park

Land Classifications

Staff recommends that the Commission classify Twanoh State Park as a combination of Heritage, Natural, Recreation, and Resource Recreation Areas (Figure 2).

Heritage Areas

To reflect the park's status as a Civilian Conservation Corps-constructed facility, staff recommends classifying the majority of the historic park campground and constructed day-use facilities as a Heritage Area. This includes the campground and historic bathhouses, and kitchen shelters (excluding the existing paved parking areas). The log and stone structures and the openness of the original CCC park development offer a rustic park experience. While demand for more modern campground facilities could justify expansion and larger and more "full-hookup" sites, any intrusion into the historic landscape would diminish the site's historical integrity and the park visitor's experience. Staff therefore recommends against any expansion of camping facility in this area. The Heritage classification allows for a shared use hiking, cycling, and equestrian link from parking areas to the upper trail system as part of future trails planning and development.

Activities permitted in Heritage Areas include:

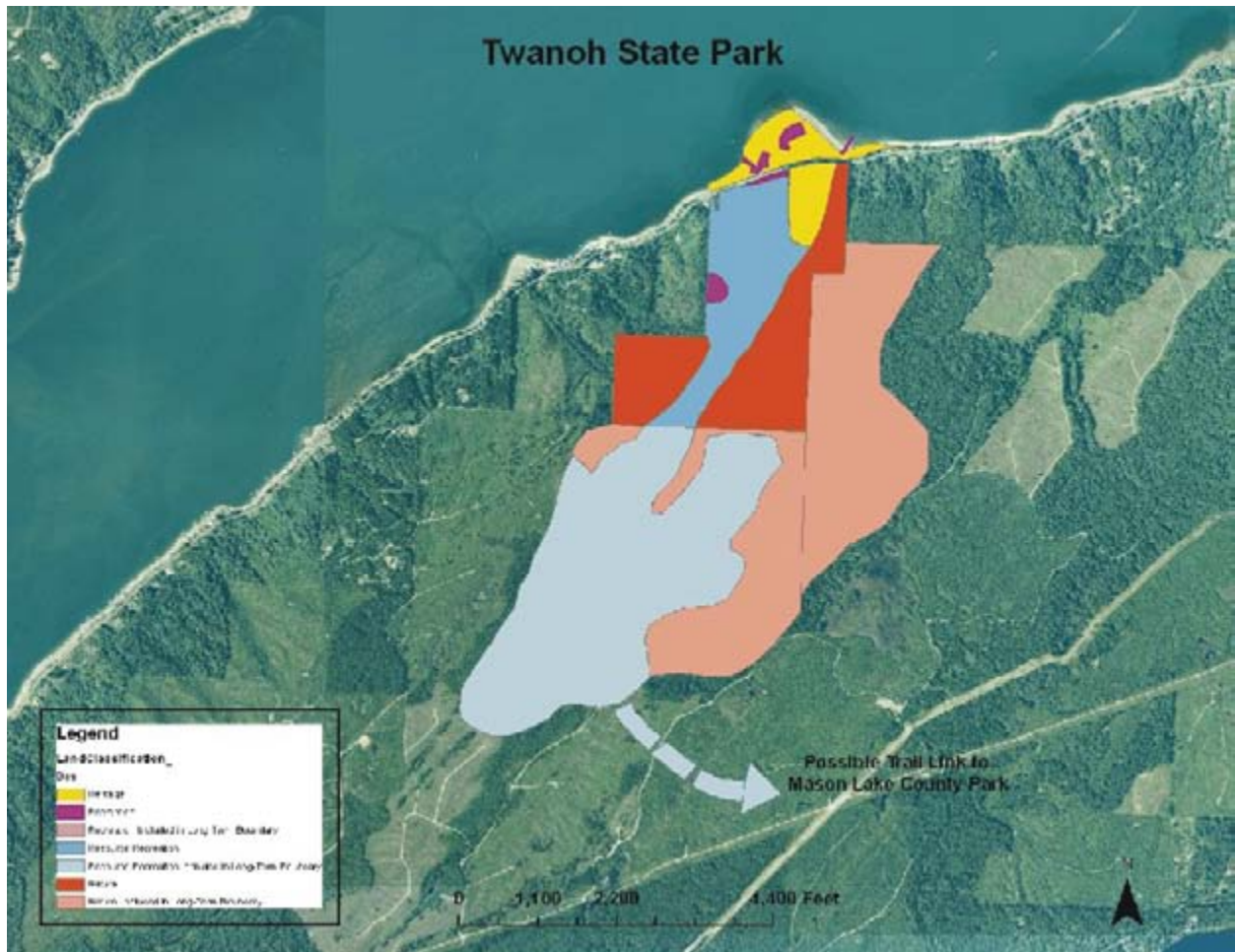
- Filming/Special Events
- Harvesting (edible fruits, mushrooms, shellfish)
- Off-Trail Hiking
- Wood Debris Collection
- Water: Kayaking/Canoeing
- Water: Sailing
- Water: Swimming
- Haying

Activities *conditionally* permitted under the agency's land classification system may be permitted at specific sites only with the concurrence of the Commission. Activities conditionally permitted in Heritage Areas include:

- Farming/orchards
- Grazing
- Metal Detecting
- Technical Rock Climbing
- Off-Trail Equestrian
- Off-trail Cycling
- Paragliding
- Orienteering
- Water: Windsurfing

Of these, the staff recommends the Commission permit all recreational activities except: wood debris collection, grazing, metal detecting and off trail equestrian and off trail cycling at Twanoh State Park.

Figure 2. Twanoh State Park Land Classification and Long-Term Boundary Staff Recommendations



Recreation Areas

The upper group camp, the boat launch area and the day-use parking area at Twanoh State Park are the high intensity, modern, developed park facilities. Staff recommends the Commission classify both areas as Recreation Areas to permit intensive recreation opportunities to continue.

Activities permitted in Recreation Areas applicable to Twanoh State Park include filming/special events and harvesting mushrooms and edible fruiting bodies. Activities conditionally permitted in Recreation Areas under the land classification system do not apply to Recreation Areas recommended for Twanoh State Park.

Resource Recreation Areas

Natural forested areas and riparian areas within the park are a significant backdrop for the camping experience and provide a healthy habitat for birds and wildlife. These areas that surround the campground and extend into the upper watershed of the park are best protected as Resource Recreation classification. Staff recommends that the Commission classify these areas as Resource Recreation Area to permit existing hiking trail activities and to allow for cycling and equestrian trail opportunities as part of future trail planning and development.

The trail routes looping through the upper watershed of the park offer a potential to connect with a proposed overland trail system connecting to Mason Lake County Park, several miles northeast. These trail corridors should be classified as a Resource Recreation Area to permit existing and potential shared-use hiking, cycling, and equestrian trail connections, while limiting additional development to that consistent with preservation of adjacent cultural landscapes and natural features.

Activities Permitted in Resource Recreation Areas, by land classification include:

- Filming/Special Events
- Harvesting (fruits, mushrooms, algae, fish, and shellfish)
- Haying
- Metal Detecting
- Orienteering
- Off-Trail Hiking
- Paragliding
- Water: Kayaking/Canoeing
- Water: Sailing
- Water: Swimming

Activities conditionally permitted in Resource Recreation Areas include:

- Farming/orchards
- Grazing
- Off-Trail Equestrian
- Off-Trail Cycling

Staff recommends the Commission not permit any conditional uses in Resource Recreation Areas.

Natural Areas

The mature conifer forest surrounding the upland campground and the stream corridor along the west edge of the park are among the park's most significant natural features. Staff recommends these areas be classified as a Natural Area to restrict development and emphasize interpretation.

Activities permitted in Natural Areas include:

- Harvesting (fruits, mushrooms, algae, fish, and shellfish)
- Off-Trail Hiking
- Trails - Hiking

Activities conditionally permitted in Natural Areas include:

- Filming/Special Events
- Technical Rock Climbing
- Water: Kayaking/Canoeing
- Water: White Water Boating
- Water: Skiing
- Water: Sailing

Staff recommends the Commission not permit any conditional uses in Natural Areas.

Long-Term Park Boundary

Staff recommends that the following properties be included within the park's long-term boundary:

- Green Diamond property adjacent to the southern and eastern boundary of the park which outlines the upper watershed owned by Green Diamond.
- Green Diamond property adjacent to the park on the south boundary, which would provide a trail linkage to Mason County Parks.

State Parks seeks to acquire properties identified in this action on a willing seller basis.

Potlatch State Park

Land Classifications

Staff recommends that the Commission classify Potlatch State Park as a combination of Heritage, Recreation, and Resource Recreation Areas (Figure 3).

Heritage Areas

To reflect the park's status as a significant Native American gathering place, staff recommends that the Commission classify the developed day-use portion of the park as a Heritage Area.

Activities permitted in Heritage Areas include:

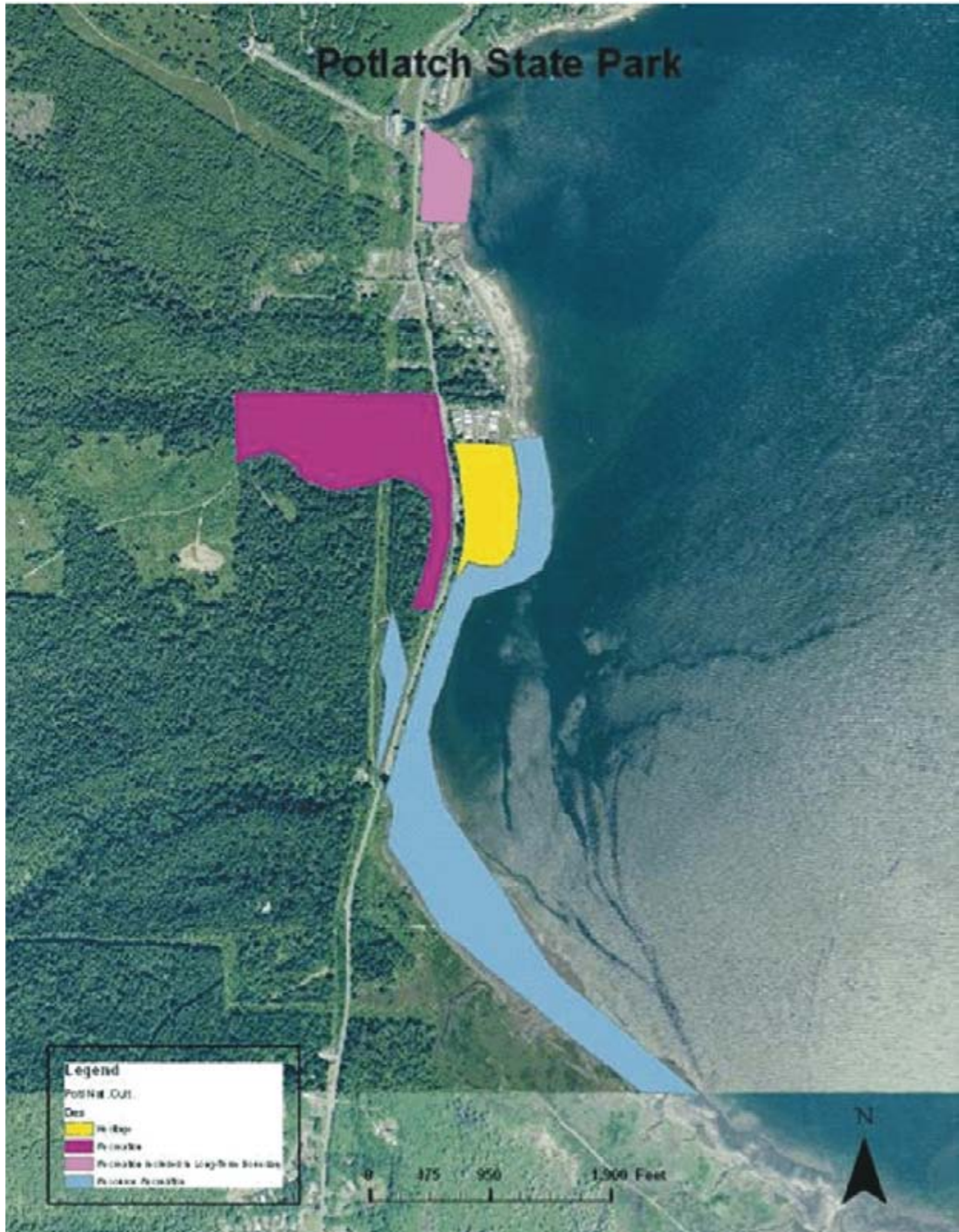
- | | |
|--|-------------------------|
| • Filming/Special Events | • Water: Swimming |
| • Harvesting (edible fruits, mushrooms, shellfish) | • Interpretive - kiosks |
| • Off-Trail Hiking | • Interpretive – signs |
| • Wood Debris Collection | • Interpretive trail |
| • Water: Kayaking/Canoeing | |
| • Water: Sailing | |

Activities *conditionally* permitted under the agency's land classification system may be permitted at specific sites only with the concurrence of the Commission. Activities conditionally permitted in Heritage Areas include:

- | | |
|---------------------------|----------------------|
| • Metal Detecting | • Paragliding |
| • Technical Rock Climbing | • Orienteering |
| • Off-Trail Equestrian | • Water: Windsurfing |
| • Off-Trail Cycling | |

Staff recommends the Commission permit orienteering and windsurfing in Heritage Areas.

Figure 3. Potlatch State Park Land Classification and Long-Term Boundary Staff Recommendations



Recreation Areas

The campground at Potlatch State Park includes 37 campsites in the established campground, with an additional 51 sites in the newly acquired Minerva Beach property. While future planning will be needed to redesign and meld the two camp areas together, their location on Hood Canal makes both sites popular with the public. Staff recommends the Commission classify both campgrounds as Recreation Areas to permit camping opportunities to continue.

Within the park's long-term boundary, staff recommends classification of a Recreation Area encompassing the existing saltwater boat launch owned by Tacoma Power. This classification would allow retention and use of the launch if ever acquired by the park.

Activities permitted in Recreation Areas applicable to Potlatch State Park include filming/special events and metal detecting. Currently, no land at Potlatch is cleared for metal detecting. Activities conditionally permitted in Recreation Areas under the land classification system do not apply to Recreation Areas recommended for the park.

Resource Recreation Areas

Beaches and tidelands fronting the park provide an extremely popular recreation attraction. Visitors access these areas on foot from upland parking areas and by private boats – both hand propelled and powered – to harvest shellfish, beachcomb, picnic, and enjoy other traditional beach activities. During the open shellfish season, large numbers of people use the park's beaches. Staff recommends the Commission classify tidelands, along with a small wedge of land along Highway 101, as a Resource Recreation Area.

Activities Permitted in Resource Recreation Areas, by land classification include:

- Filming/Special Events
- Harvesting (fruits, mushrooms, algae, fish, and shellfish)
- Haying
- Metal Detecting
- Orienteering
- Off-Trail Hiking
- Paragliding
- Water: Kayaking/Canoeing
- Water: Sailing
- Water: Swimming

As indicated earlier, the Commission currently has not approved any areas for metal detecting at Potlatch State Park. Activities conditionally permitted in Resource Recreation Areas include:

- Farming/Orchards
- Grazing
- Off-Trail Equestrian
- Off-Trail Cycling
- Water: Jet Skiing
- Water: Power Boating
- Water: Skiing
- Water: Wind Surfing

Of these conditional uses, staff recommends the Commission only approve power boating and wind surfing activities in saltwater shoreline/tideland Resource Recreation Area at the park.

Long-Term Park Boundary

Staff recommends that the Tacoma Power saltwater boat launch be included within the park's long-term boundary. Washington State Parks should generally approach acquisition of properties identified in this action on a willing seller basis.

Lake Isabella State Park

Land Classifications

Staff recommends that the Commission classify Lake Isabella State Park as a combination of Heritage, Recreation, and Resource Recreation Areas (Figure 4).

Heritage Areas

To reflect the park's status as one of the original homesteads in Mason County, staff recommends the Commission classify the homestead site, surrounding hayfields and heritage orchards as a Heritage Area. Activities permitted in Heritage Areas include:

- Filming/Special Events
- Harvesting (edible fruits, mushrooms, shellfish)
- Haying
- Off-Trail Hiking
- Wood Debris Collection

Activities *conditionally* permitted under the agency's land classification system may be permitted at specific sites only with the concurrence of the Commission. Activities conditionally permitted in Heritage Areas include:

- Farming/orchards
- Grazing
- Metal Detecting
- Technical Rock Climbing
- Off-Trail Equestrian
- Off-Trail Cycling
- Paragliding
- Orienteering

Staff recommends the Commission permit farming/orchards and orienteering in Heritage Areas. This classification also allows for development of shared use hiking, cycling, and equestrian trails as part of future trail planning.

Recreation Areas

Several areas of Lake Isabella State Park remain significantly disturbed as a result of previous land uses. These areas include a portion of the property south of Delight Park Road, as well as two smaller areas on the western and eastern sides of the hayfield north of the road. Focusing future development in these disturbed areas would minimize impacts on sensitive resources. Staff recommends the Commission classify these areas as Recreation Areas to provide flexibility for future park planning and development.

Activities permitted in Recreation Areas applicable to Lake Isabella State Park include filming/special events and metal detecting. Currently, no land at Lake Isabella State Park has been cleared for metal detecting. This classification also allows for shared-use hiking, cycling, and equestrian trails and related trailhead and camping facilities as part of future planning and development.

Figure 4. Lake Isabella Land Classification and Long-Term Boundary Staff Recommendations



Resource Recreation Areas

The park's shoreline, wetlands, and mature forest stands provide limited opportunities for recreation, such as trails and swimming, as well as habitat for fish and wildlife. Staff recommends that the Commission classify these areas as Resource Recreation Areas to permit existing trail activities and allow for shared use, hiking, cycling, and equestrian trails, and other minimal facilities as part of future planning and development.

Within the park's long-term boundary, staff recommends classification of a Resource Recreation Area encompassing an easement through private property to link the western park boundary with nearby lands owned by Green Diamond Resource Company. This classification would allow for shared-use hiking, cycling, and equestrian trail link between the park and Green Diamond's trail network as part of future trails planning and development.

Activities Permitted in Resource Recreation Areas, by land classification include:

- Filming/Special Events
- Harvesting (fruits, mushrooms, algae, fish, and shellfish)
- Haying
- Metal Detecting
- Orienteering
- Off-Trail Hiking
- Paragliding
- Water: Kayaking/Canoeing
- Water: Sailing
- Water: Swimming

As indicated earlier, the Commission currently has not approved any areas for metal detecting at Lake Isabella. Activities conditionally permitted in Resource Recreation Areas include:

- Farming/Orchards
- Grazing
- Off-Trail Equestrian
- Off-Trail Cycling
- Water: Jet Skiing
- Water: Power Boating
- Water: Skiing
- Water: Wind Surfing

Of these activities, staff recommends the Commission permit farming/orchards and windsurfing in Resource Recreation Areas.

Long-Term Park Boundary

Staff recommends that the following property be included within the park's long-term boundary:

- Trail easement from the western park boundary to nearby Green Diamond land and its extensive trail network.
- Washington Department of Fish and Wildlife boat launch

State Parks seeks to acquire properties identified in this action on a willing seller basis.

Lilliwaup Tidelands

Land Classifications

Staff recommends that the Commission classify Lilliwaup Tidelands as a Resource Recreation Area (Figure 5).

The entire park consists of beaches and tidelands, which are the park's recreation attraction. Visitors access these areas on foot from an upland parking area and by private boats – both hand propelled and powered – to harvest shellfish, beachcomb, picnic, and enjoy other traditional beach activities. Staff recommends that the Commission classify the entire park as a Resource Recreation Area, to permit existing uses to continue.

Activities Permitted in Resource Recreation Areas, by land classification include:

- Filming/Special Events
- Harvesting (fruits, mushrooms, algae, fish, and shellfish)
- Haying
- Metal Detecting
- Orienteering
- Off-Trail Hiking
- Paragliding
- Water: Kayaking/Canoeing
- Water: Sailing
- Water: Swimming

The Commission currently does not permit metal detecting or algae harvest at Lilliwaup Tidelands. Activities conditionally permitted in Resource Recreation Areas include:

- Farming/Orchards
- Grazing
- Off-Trail Equestrian
- Off-Trail Cycling
- Water: Jet Skiing
- Water: Power Boating
- Water: Skiing
- Water: Wind Surfing

Of these conditional uses, staff recommends the Commission only approve power boating and wind surfing activities in saltwater shoreline/tideland Resource Recreation Areas at Lilliwaup Tidelands.

Long-Term Park Boundary

Staff recommends that the portion of the Highway 101 right-of-way adjacent to Lilliwaup Tidelands be included within the park's long-term boundary to foster improved recreation management.

Figure 5. Lilliwaup Tidelands Land Classification and Long-Term Boundary Staff Recommendations



APPENDIX 3**DRAFT LOWER HOOD CANAL AREA MANAGEMENT PLAN**

Electronic version available for download at: <http://www.parks.wa.gov/plans/lowerhoodcanal/>

Hard copy available by request only. Contact Nata Hurst, Washington State Parks Planning and Research Program, P.O. Box 42650, Olympia, WA 98504-2650, call (360) 902-8638, or E-mail: nata.hurst@parks.wa.gov

APPENDIX 4

LOWER HOOD CANAL STATE PARKS – PUBLIC COMMENTS

Electronic version available for download at: <http://www.parks.wa.gov/plans/lowerhoodcanal/>

Hard copy available by request only. Contact Nata Hurst, Washington State Parks Planning and Research Program, P.O. Box 42650, Olympia, WA 98504-2650, call (360) 902-8638, or E-mail: nata.hurst@parks.wa.gov