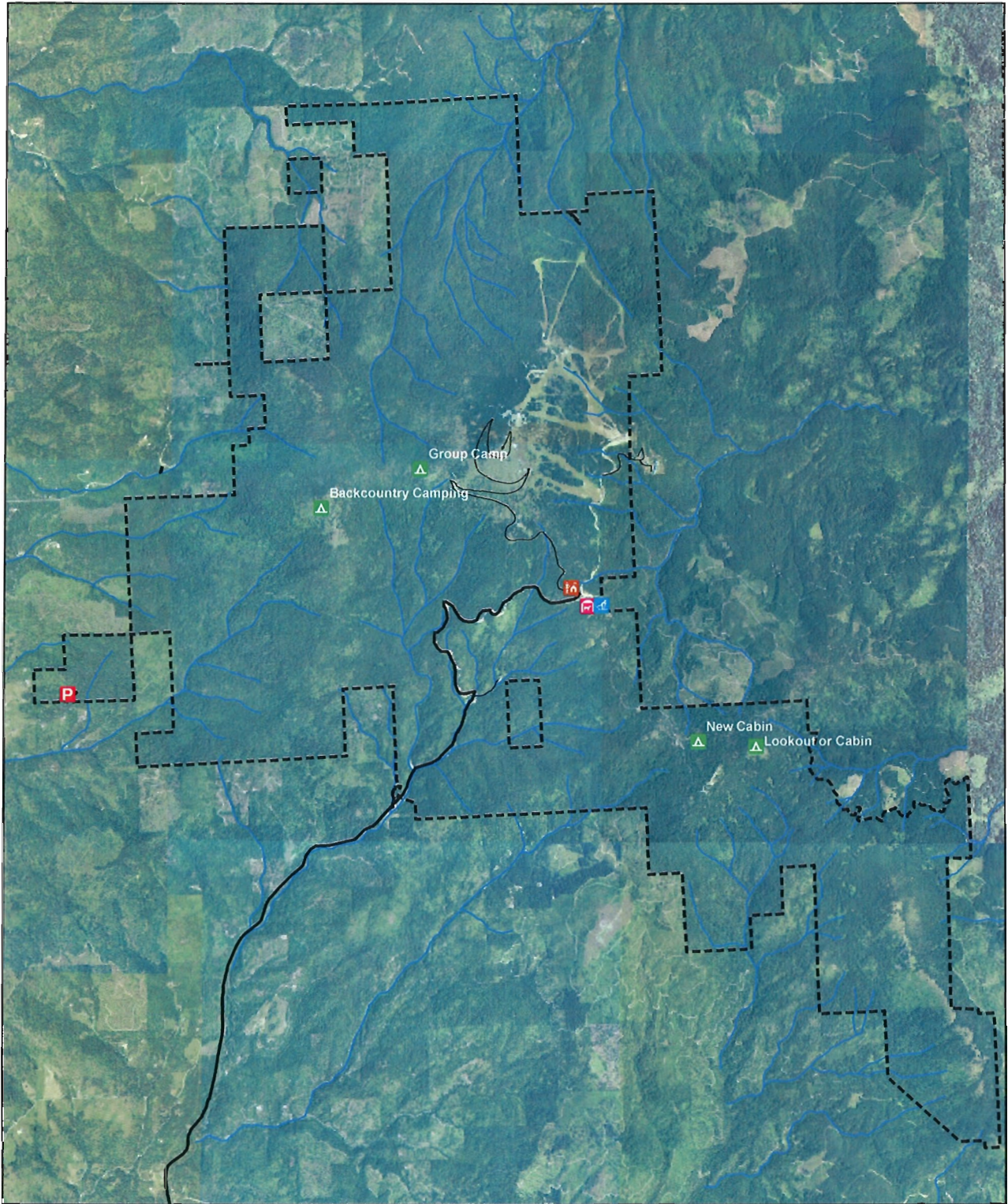


Mount Spokane State Park Master Facilities Plan--Proposed Action Alternative



Legend

- | | | |
|--|---|---|
|  New Park Administrative Facility |  Equestrian Campground |  Mount Spokane State Park |
|  New Trailhead |  Existing State Roads |  Existing Park Roads |
|  Second Lodge Building |  Streams | |
|  Camping or Lookout | | |

Note: Facility locations are conceptual at this time. Exact locations and design will be determined upon resource survey completion.

