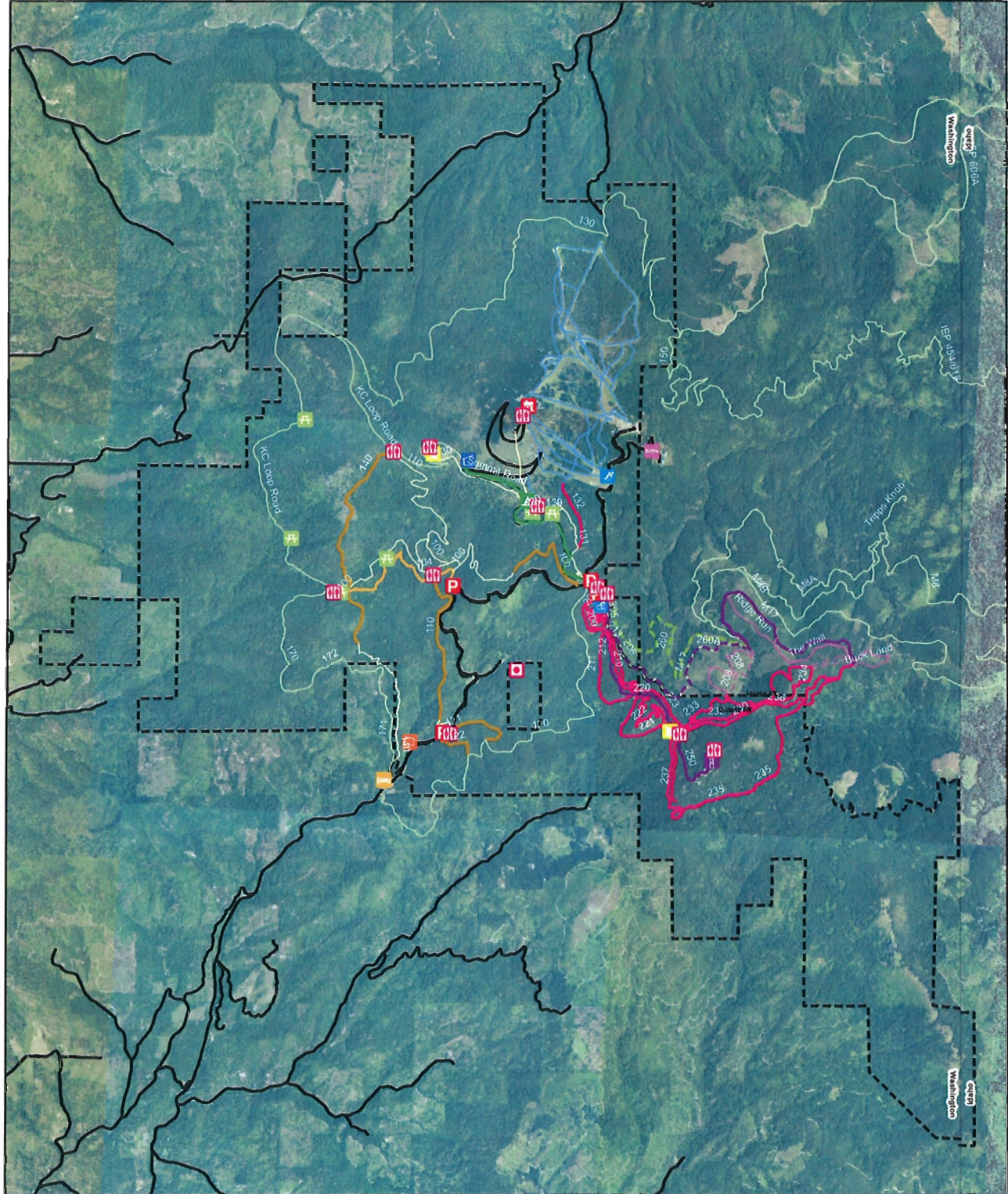


Mount Spokane State Park Winter Trails



Legend

- Bald Knob Campground (elevation 5106')
- Bear Creek Lodge (elevation 3078')
- Camp Fosseen (elevation 3615')
- Condos
- Picnic Area
- CCC Camp Headquarters (elevation 5158')
- Cook's Cabin Site
- Main Lodge and Chairs 1 + 2

- Quartz Mountain Lookout (elevation 5133')
- Parking
- NOVA Hut (elevation 4751')
- Park Office (elevation 3180')
- Selkirk Lodge (elevation 4580')
- Mount Spokane Summit and Vista House (elevation 5883')
- Restroom

- Public Roads
- Proposed Winter Trails**
- Dirt Road, Nordic
- Single, Nordic
- Fire Rd, Snowmobile
- Single, Snowshoe
- Existing Winter Trails**
- Dirt Road, Nordic
- Fire Road, Nordic
- Dirt Road, Snowshoe
- Fire Road, Snowshoe
- Single, Snowshoe
- Paved Road, Snowmobile
- Dirt Road, Snowmobile
- Alpine Ski
- Park_Boundary_split

