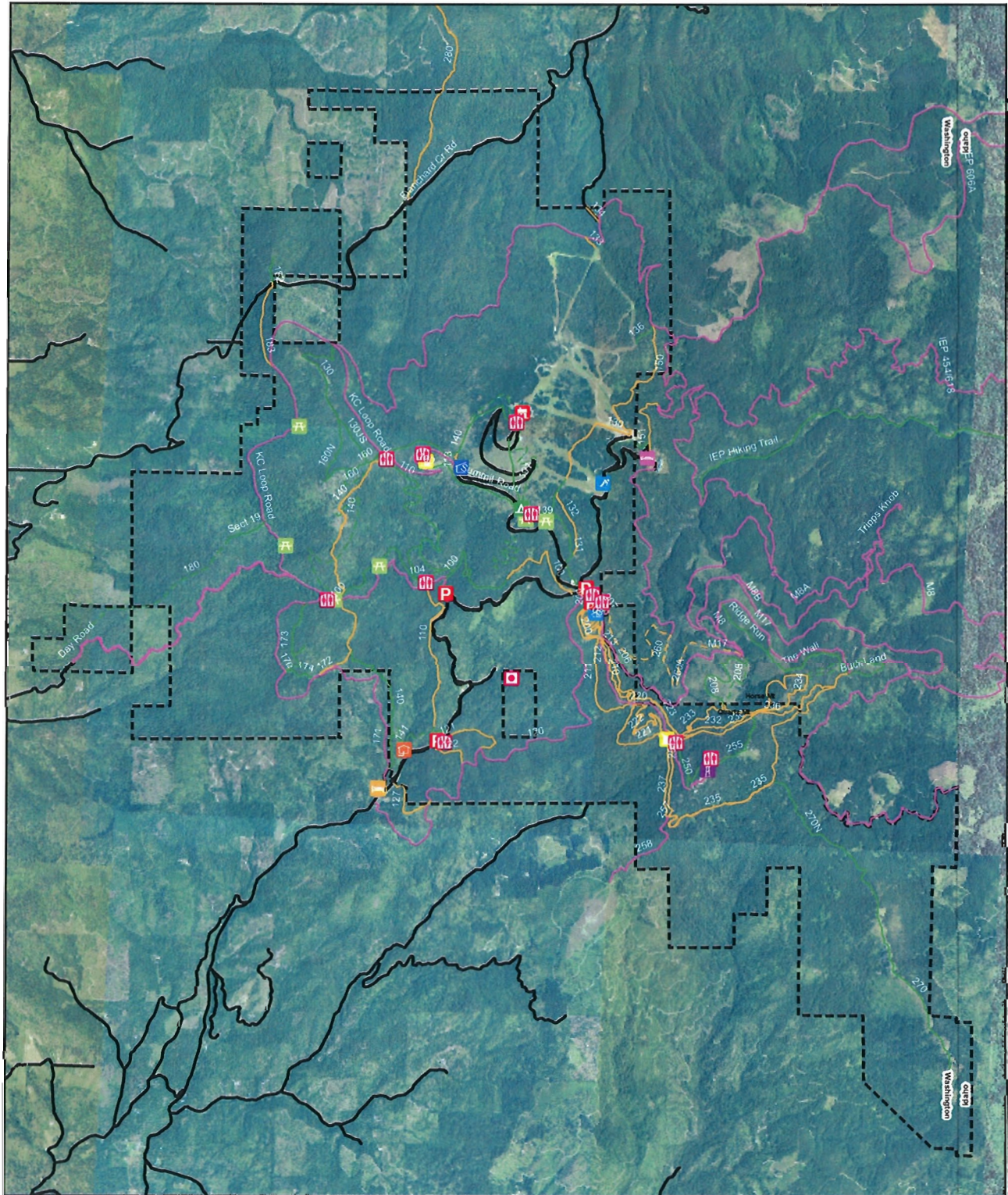


Mount Spokane State Park Summer Trails



Legend

- | | | | |
|---|--|--------------------------|----------------------------------|
| Bald Knob Campground (elevation 5106') | Quartz Mountain Lookout (elevation 5133') | Summer Trails Paved Road | Proposed Summer Trails Dirt Road |
| Bear Creek Lodge (elevation 3078') | Parking | Summer Trails Dirt Road | Proposed Summer Trails Fire Rd |
| Camp Fosseen (elevation 3615') | NOVA Hut (elevation 4751') | Summer Trails Fire Road | Proposed Summer Trails Single |
| Condos | Park Office (elevation 3180') | Summer Trails Single | Park_Boundary_split |
| Picnic Area | Selkirk Lodge (elevation 4580') | | |
| CCC Camp Headquarters (elevation 5158') | Mount Spokane Summit and Vista House (elevation 5883') | | |
| Cook's Cabin Site | Restroom | | |
| Main Lodge and Chairs 1 + 2 | | | |

0 0.25 0.5 1 Miles

