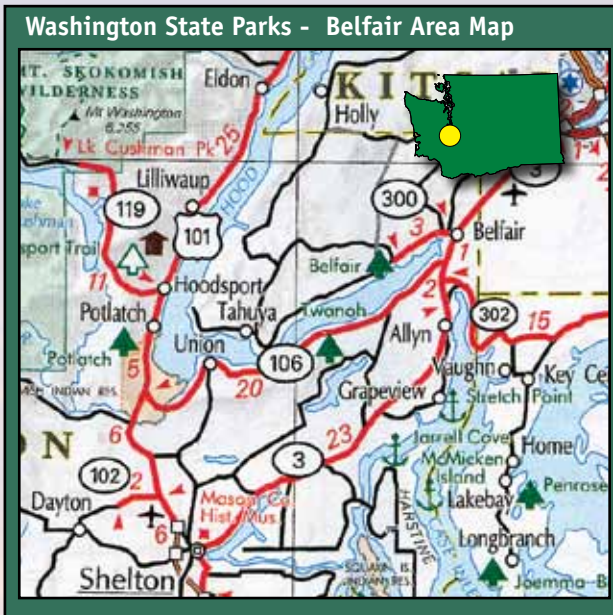


Your Guide To

Belfair State Park

Things to remember

- Camping reservation may be made for May 15 through Sept. 15 by calling (888) CAMPOUT (888-226-7688). Reservations may be made up to 9 months in advance.
- Hours – Park opens at 6:30 a.m. in the summer and 8 a.m. in the winter; closes year-round at dusk. Non-camping visitors must leave the park by dusk. Visitors should park in the parking lot by the registration booth to help eliminate congestion and damage to park grounds.
- Wildlife, plants and all park buildings, signs, tables and other structures are protected; removal or damage of any kind is prohibited. Hunting, feeding of wildlife and gathering firewood on state park property is prohibited. Firewood is available for purchase.
- One camping party is allowed per site. Maximum of eight people per campsite.
- Campsites may not be held for other parties.
- Check-out time is 1 p.m. Check in time is 2:30 p.m. Check-in and register within 30 minutes of arrival.
- One extra vehicle without sleeping accommodations may be parked at campsite for a fee, if it fits entirely within the designated parking area. All extra vehicles must be paid for at the park office. Extra overnight parking also is available near the park office.
- Pets must be on a leash no longer than eight-feet-long and under physical control at all times. This includes trail areas and campsites. Pet owners must clean up after pets on all state park lands. Curb pets' excessive barking.
- Quiet hours are from 10 p.m. to 6:30 a.m.
- Bicycles should be ridden on paved roads only. Please stay off posted walkways and trails. Due to limited visibility, do not ride bikes after dusk.
- Keep valuables and ice chests locked securely and inside vehicle at night.



Belfair State Park
 3151 NE State Route 300
 Belfair, WA 98528
 (360) 275-0668
 Reservations online at
www.parks.wa.gov/reservations or
 (888) CAMPOUT or (888) 226-7688



**Washington State
 Parks and Recreation Commission**

P.O. Box 42650
 Olympia, WA 98504-2650
 (360) 902-8500
www.parks.wa.gov

.

Commission members:
 Patricia T. Lantz Joe Taller
 Fred Olson Cecilia Vogt
 Rodger Schmitt Lucinda S. Whaley
 Eliot Scull

Agency director: Rex Derr

*All Washington state parks are developed and maintained
 for the enjoyment of all people.*

To request this brochure in an alternative format, please call (360) 902-8844 or the Washington Telecommunications Relay Service at (800) 833-6388. P&R 45A-81000-1 (2/2010)



Park overview

Belfair State Park is a year-round camping park situated on the warm saltwater beaches of Hood Canal. The park features saltwater tide flats, wetlands, saltwater recreation, shellfish harvesting, bird watching and a multi-purpose grass area popular for softball, soccer, football and kite flying. The park has more than 3,000 feet of freshwater shoreline along Big Mission and Little Mission Creek. The park offers interpretive displays on shellfish, water quality and the life cycle of salmon.



Park history

Long ago, the site was a central meeting place for generations of American Indians. The Skokomish tribe used the area as a campsite and for gathering shellfish. The area was later used as log storage before officially becoming a state park in 1952. The park is named for the nearby community of Belfair.

Park amenities & facilities

- 184 campsites, including 47 with full hook-up facilities and a Cascadia Marine Trail campsite. Some sites are grouped together so campers can be nearby each other. Two camp loops close during the winter.
- Modern restrooms with hot showers (fee).
- Trailer dump station.
- Day-use area offers large field for baseball, soccer or football, an unguarded saltwater swimming beach, horseshoe pit, volleyball area, picnic tables, barbecues and a playground.
- Big Mission and Little Mission creeks provide up-close viewing of spectacular salmon spawning in the fall months.
- Open areas ideal for kite flying, bicycling and bird watching.
- Department of Natural Resources Tahuya Forest area located nearby, with multi-use trails for hiking, mountain biking and motorized use, numerous small lakes and streams and many acres of managed tree farms.

