

121°12'56"W 121°11'56"W 121°10'56"W 121°9'56"W 121°8'56"W 121°7'56"W 121°6'56"W 121°5'56"W 121°4'56"W 121°3'56"W 121°2'56"W 121°1'56"W 121°0'56"W 120°59'56"W 120°58'56"W 120°57'56"W

Welcome Salmon La Sac Sno-Park Groomed Trail System

Explanation

- feat_code**
- View
 - Sno-Park
 - Restroom
 - Groomed Snowmobile Trail
 - Bladed Shoulder
 - Groomed Ski Trail
 - County_line
 - Major Junction
 - Sno-Park Access Road
 - Road
 - Wilderness Area
 - Voluntary Non-Motorized Area
 - Non-Motorized Area, No Snowmobiling
 - Wenatchee National Forest

Area has 38 miles of groomed snowmobile trails. Road # and mileage labeled between junctions.



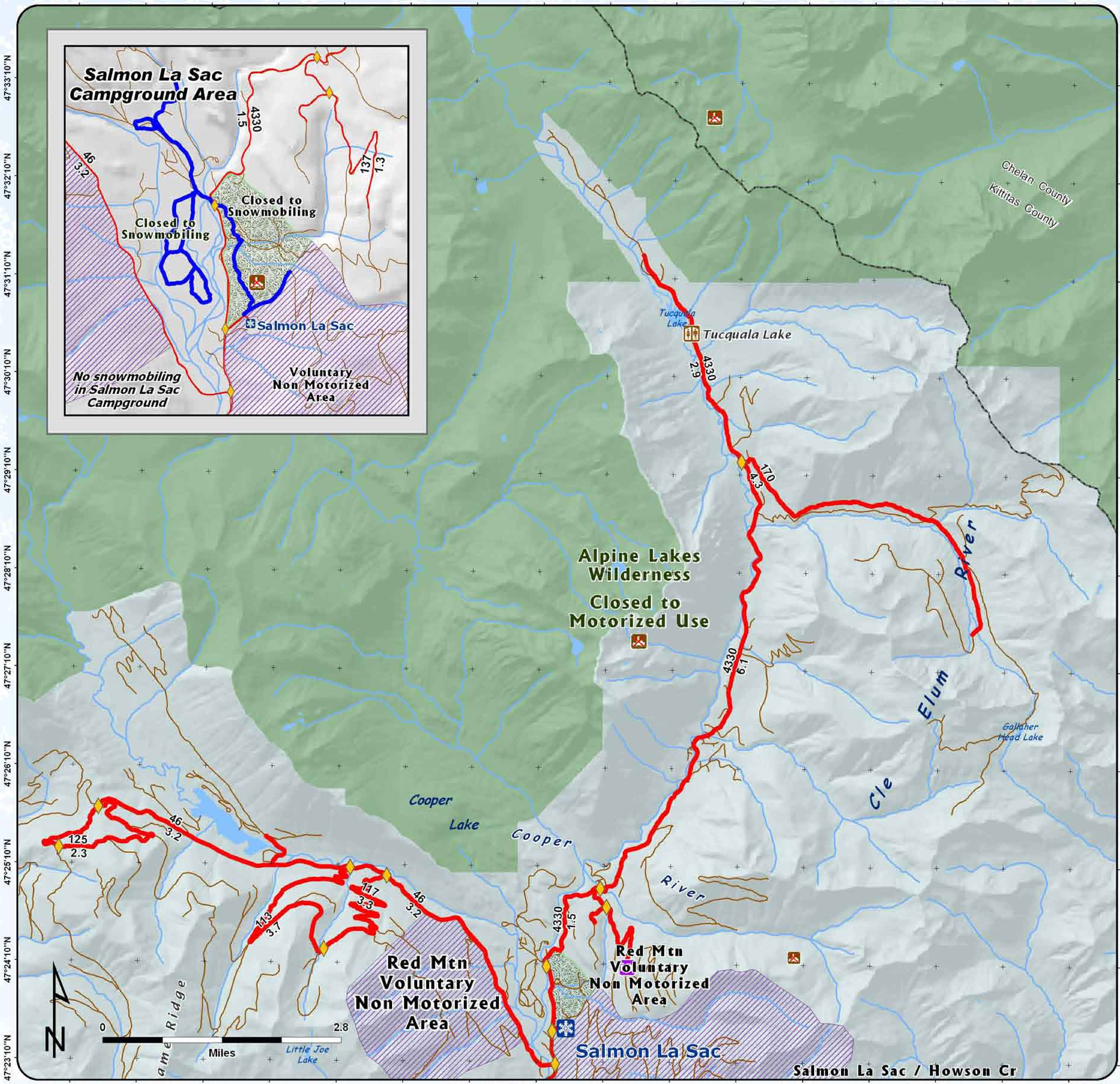
Snow grooming equipment may be on the trail at any time.

Trail grooming schedules may change without notice due to snow conditions, temperatures, equipment breakdowns, etc.

Be aware of potential avalanche danger, check www.mvac.us before you leave home.

*Trail grooming schedules and maps at www.parks.wa.gov/winter
Please report errors or comments to: winter@parks.wa.gov*

**For Emergency Call 911
Kittitas Co. Sheriff 509-925-8534**



121°12'56"W 121°11'56"W 121°10'56"W 121°9'56"W 121°8'56"W 121°7'56"W 121°6'56"W 121°5'56"W 121°4'56"W 121°3'56"W 121°2'56"W 121°1'56"W 121°0'56"W 120°59'56"W 120°58'56"W 120°57'56"W