

# Welcome

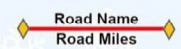
## Rattlesnake & Bethel Ridge / Soup Creek Sno-Parks

### Groomed Trail System

#### Explanation

-  Sno-Park
-  Restroom
-  View
-  Major Junction
-  Groomed Snowmobile Trail
-  Temporary Closure
-  Wilderness Area
-  Wenatchee National Forest

Area has 28 miles of groomed snowmobile trails. Road name & mileage labeled between junctions.



*Please stay on the trails, except for designated areas.*

*Snow grooming equipment may be on the trail at any time.*

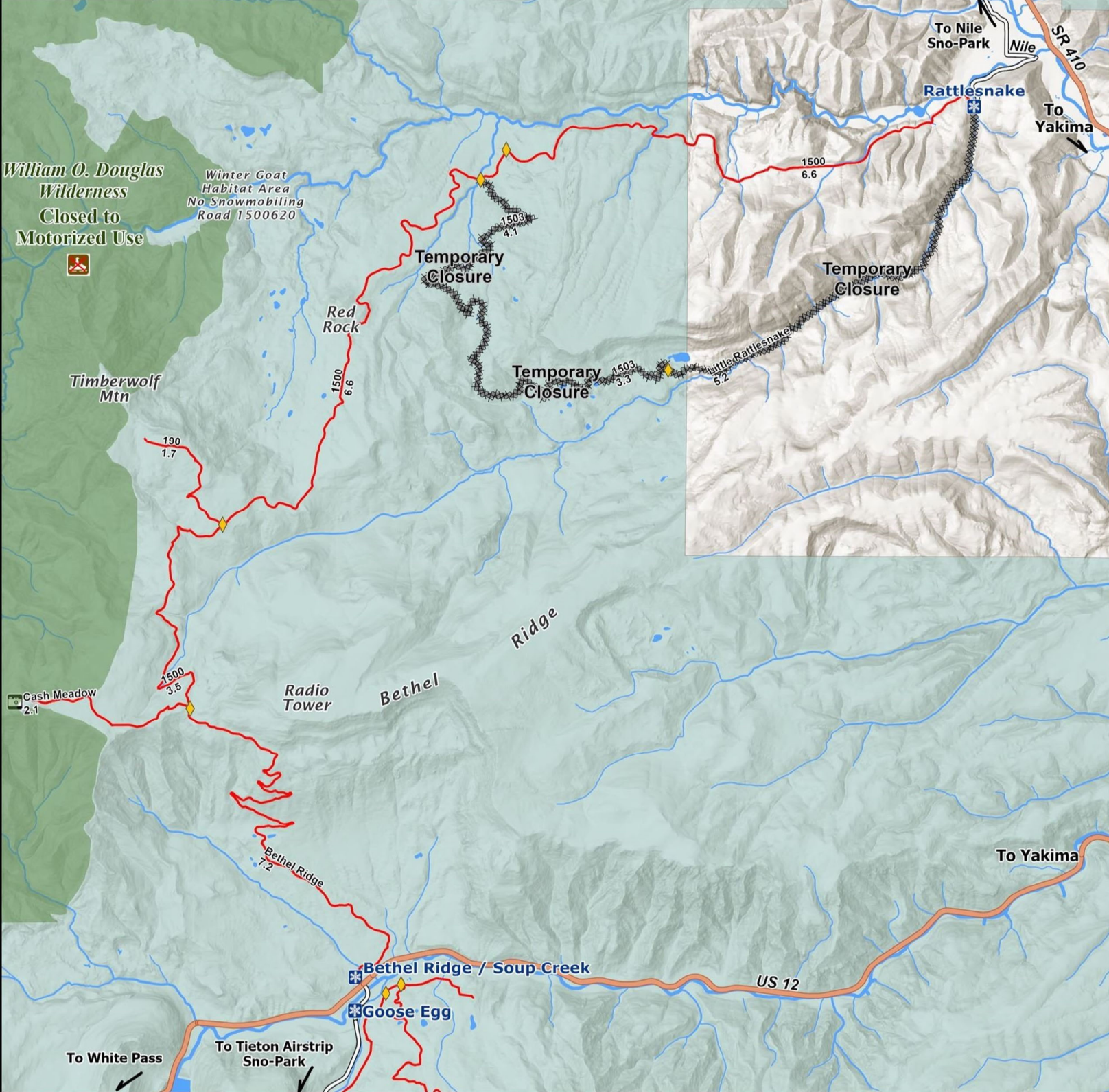
*Trail grooming schedules may change without notice due to snow conditions, temperatures, equipment breakdowns, etc.*

*Be aware of potential avalanche danger, check [www.nwac.us](http://www.nwac.us) before you leave home.*

*Trail grooming schedules and maps at [www.parks.wa.gov/winter](http://www.parks.wa.gov/winter)  
Please report errors or comments to: [winter@parks.wa.gov](mailto:winter@parks.wa.gov)*



For Emergency Call 911  
Yakima Co. Sheriff 509-574-2500



*William O. Douglas Wilderness*  
Closed to Motorized Use

Winter Goat Habitat Area  
No Snowmobiling  
Road 1500620

Timberwolf Mtn

Red Rock

Temporary Closure

Temporary Closure

Temporary Closure

Cash Meadow 2.1

1500 3.5

Radio Tower

Bethel

Ridge

Bethel Ridge 7.2

Bethel Ridge / Soup Creek

Goose Egg

US 12

To Yakima

To White Pass

To Tieton Airstrip Sno-Park

To Nile Sno-Park

Nile

SR 410

To Yakima

Rattlesnake

1500 6.6

1503 4.1

1503 3.3

1503 5.2

Little Rattlesnake

190 1.7

1500 6.6